

The background features a stylized illustration of a building with a large wheel on the left and sun rays emanating from the top right. The building is rendered in light blue and white, while the sun rays are in yellow and light blue.

Fairfield County Auditor Real Estate/GIS

How to Download Subdivision Plats

September 16, 2022

Introduction

This is a Presentation by the County Auditor on How to Download Subdivision Plats on the new website.



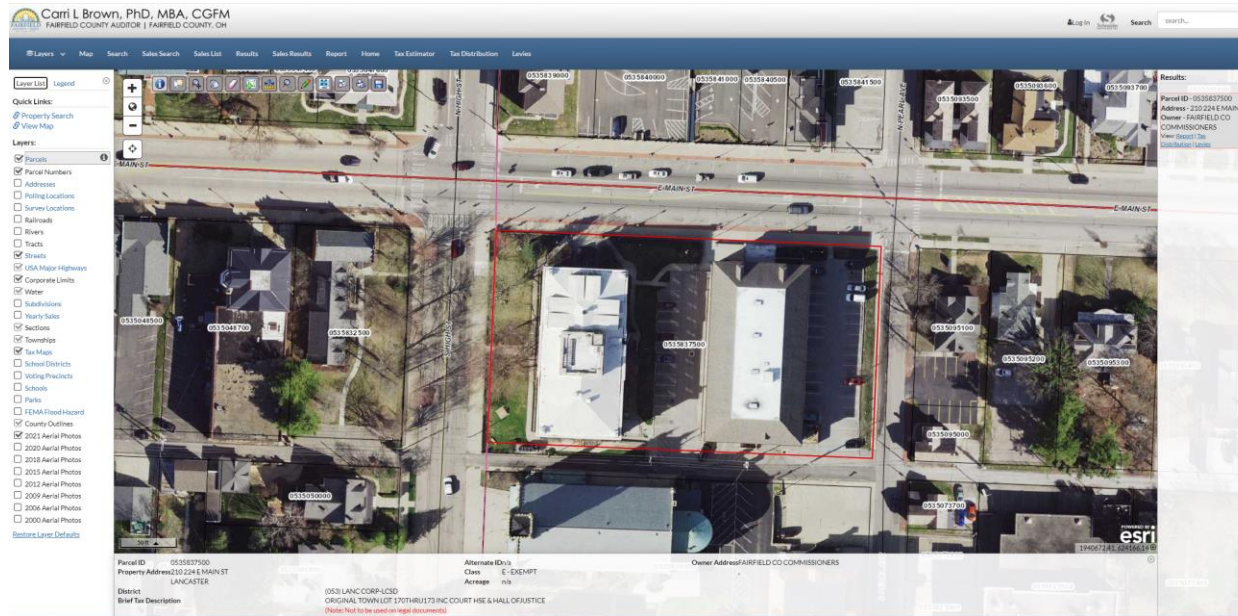
How to Download Subdivision Plats

<https://realestate.co.fairfield.oh.us>

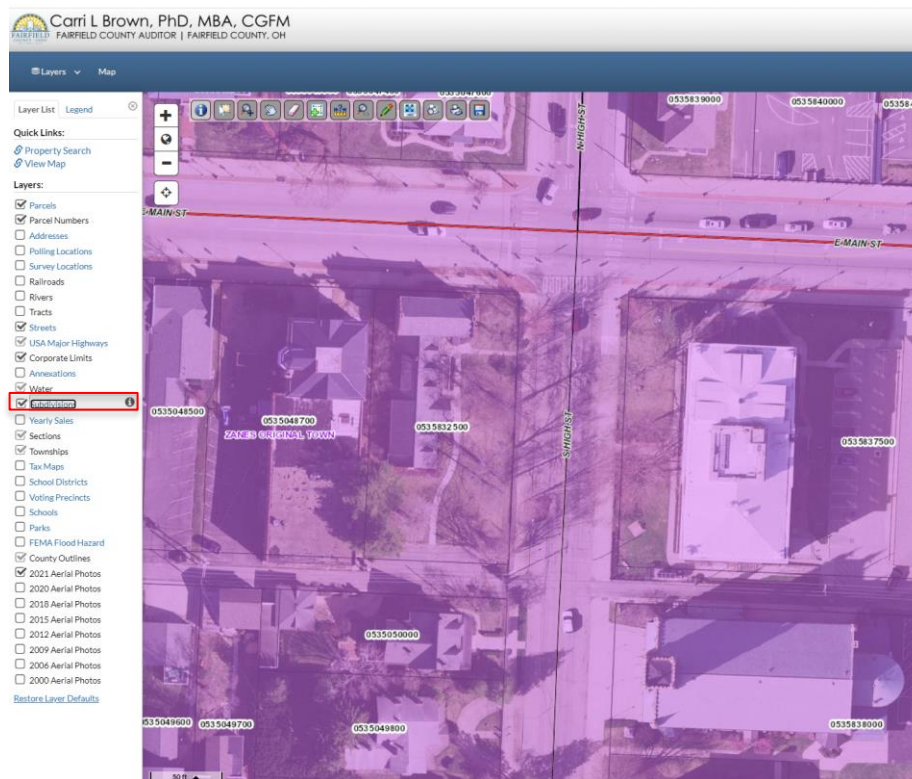
- Data searchable by Parcel Number, Owner Name or Property Address



1. Navigate to the area of interest, in this case Parcel No. 0535837500 (The Fairfield County Courthouse).



3. Click on the word Subdivisions to make the Subdivisions layer selectable (Gray box should appear around the word Subdivisions.)



4. Click anywhere within the area of interest.

5. Click on the link to open the subdivision pdf.
(There are three locations on the screen you can find the pdf link.)

